



ABERNETHY **10.0 ACRES**

- ◆ 10.00 acre acreage located South of Abernethy, SK; Private and well treed yard with a large garden and small pasture; Approximately 3 miles North of the Qu'Appelle Valley and 10 minutes to Katepwa Lake!
- ◆ Well; Reverse Osmosis; Water Bowl (in Barn)
- ◆ 32'x80' Shop (wood frame construction, metal exterior, natural gas heat, air compressor, drill press, 2 overhead doors); Barn; 4 Steel Grain Bins
- ◆ 2284 sq ft 2-Storey (1904 renovated in 2004) - Stone house with 3 bedrooms up + den on main, 2 bathrooms, open contemporary kitchen with maple cabinetry and a walk-in pantry, main floor laundry, central vac, wood-burning fireplace and a natural gas fireplace, 7'x14' deck, double detached garage with openers
- ◆ Includes - fridge, stove, dishwasher, microwave, Samsung washer & dryer

\$398,000.00

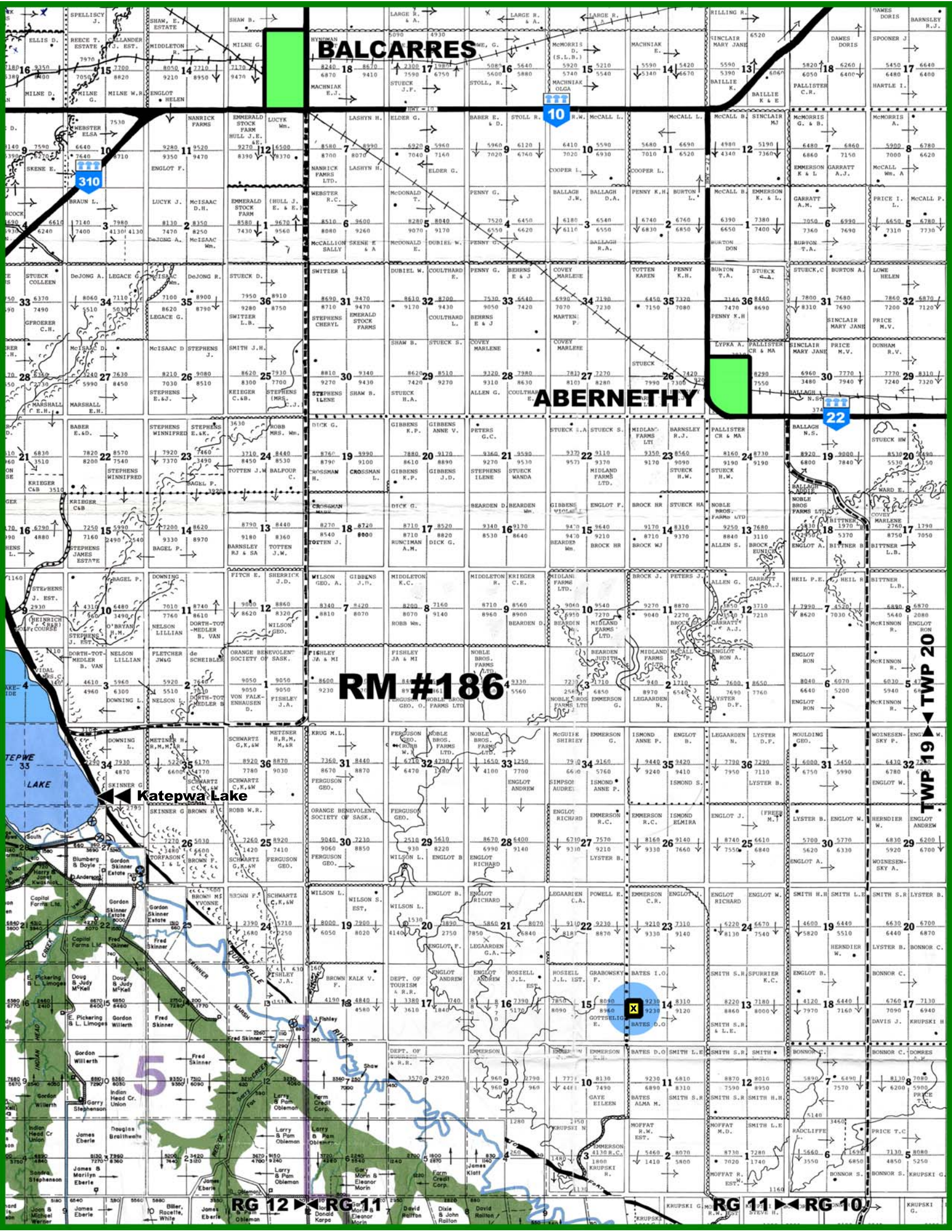


LANE REALTY CORP.
Saskatchewan's Farm & Ranch Specialists™

Phone: (306) 569-3380

Fax: (306) 569-3414

www.LaneRealtyCorp.com



BALCARRS

ABERNETHY

RM #186

Katiepwa Lake

TWP 19

TWP 20

RG 12

RG 11

RG 11

RG 10

X

5

Map content including parcel numbers, owner names (e.g., STEPHENS, GIBBENS, ENGLOT, BARNESLEY), acreage, and road names (e.g., I-10, I-22, I-310, DeJong A., Legace G.).

